



Using Windy for Flight Planning

Blake Crosby - November 2, 2023

TODAY'S AGENDA

01

ABOUT ME

A little about your presenter

02

MODELS

What are weather models and which one is best?

03

DATA LAYERS

Useful data layers to help with flight planning

04

CLIMATE CHANGE

What else to look for (smoke, forest fires)

05

REAL TIME

Using real time data layers such as weather radar

06

TRIP PLANNER

How to use Windy's trip planner.

TODAY'S AGENDA

07

TRIP #1

Planning a cross country trip.

08

TRIP #2

A local sightseeing trip.

09

Q&A

Your opportunity to ask questions!

Some Housekeeping Rules:

- Video **will be disabled** by default for all participants for privacy reasons.
- You will **be muted** during the presentation to avoid distracting others. If you have a question during the presentation please use the Zoom chat function.
- If it's easier for you to ask your question verbally: You will have the ability by the host during the Q&A period to unmute yourself.

BLAKE CROSBY

I'm a Canadian who Flies "Plane Jane", a Piper Cherokee Six.

- I am **not** a meteorologist or certified flight instructor.
- I am **not** affiliated with Windy.com.

I can be reached at: me@blakecrosby.com
You can also read my blog at fly.blakecrosby.com



[blakecrosby](https://www.facebook.com/blakecrosby)



[drunewithjetlag](https://www.instagram.com/drunewithjetlag)



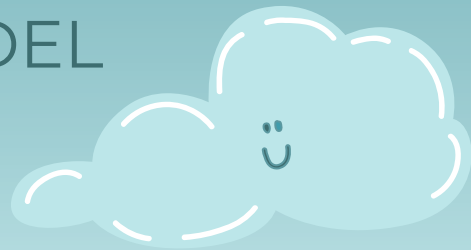
[crosbyblake](https://www.linkedin.com/company/crosbyblake)



02

WEATHER MODELS

WHAT IS A WEATHER MODEL



A SET OF INSTRUCTIONS/RULES

For a computer to use to "model" or "forecast" the weather.



REGION IS SLICED INTO PARCELS

And the computer forecasts the weather conditions at set altitudes in each parcel.



MODELS AVAILABLE IN WINDY

Model Name	Resolution	Update Cycle	Best Used in CAN/USA
ECMWF	9 km	6 hours	✓
HRRR	3 km	1 hour	✓
GFS	22 km	6 hours	✓
NAM	5 km	6 hours	
ICON	13 km	6 hours	

[1] ECMWF is considered to be the most accurate forecast model worldwide.



03

DATA LAYERS



COMMON DATA LAYERS

Data Layer	Altitude	Used For
Wind	Surface & Aloft	Runway direction, cruise winds aloft
Pressure	Surface	Determining fronts and weather.
Cloud Base	All	VFR Flights
Visibility	Surface	Fog/Low Lying clouds
Thermals	All	Daytime heating turbulence

[2] Note: Some of these layers may only be available in Windy Premium

COMMON DATA LAYERS

Data Layer	Altitude	Used For
Aerosol	All	Volcanic ash/Forest fires
Freezing Altitude	All	IFR flights to prevent airframe icing
Temperature	Surface & 500mb	Determining air masses
Rain & Thunder	Surface	Location of convective and non convective rain

[2] Note: Some of these layers may only be available in Windy Premium

CLIMATE CHANGE

04



FOREST FIRES

Number of forest fires in the USA have doubled between 1984 and 2015 [3]

HURRICANES

An increase in flood levels, rain amount, and the number of major hurricanes. [4]





FOREST FIRES



SURFACE VISIBILITY

Will most likely not match visibility aloft. Horizon may be obscured for VFR flight.[5]

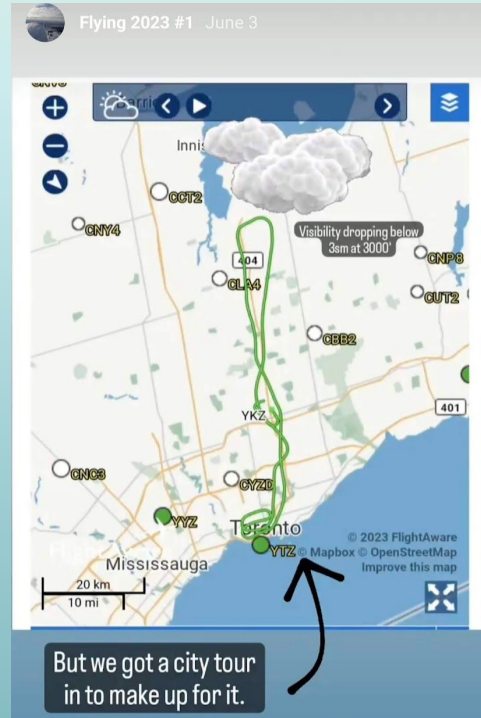


AEROSOL INGESTION

Smoke and ash may degrade engine performance or affect flight crew.



FOREST FIRES








TRUCKEE ACCIDENT

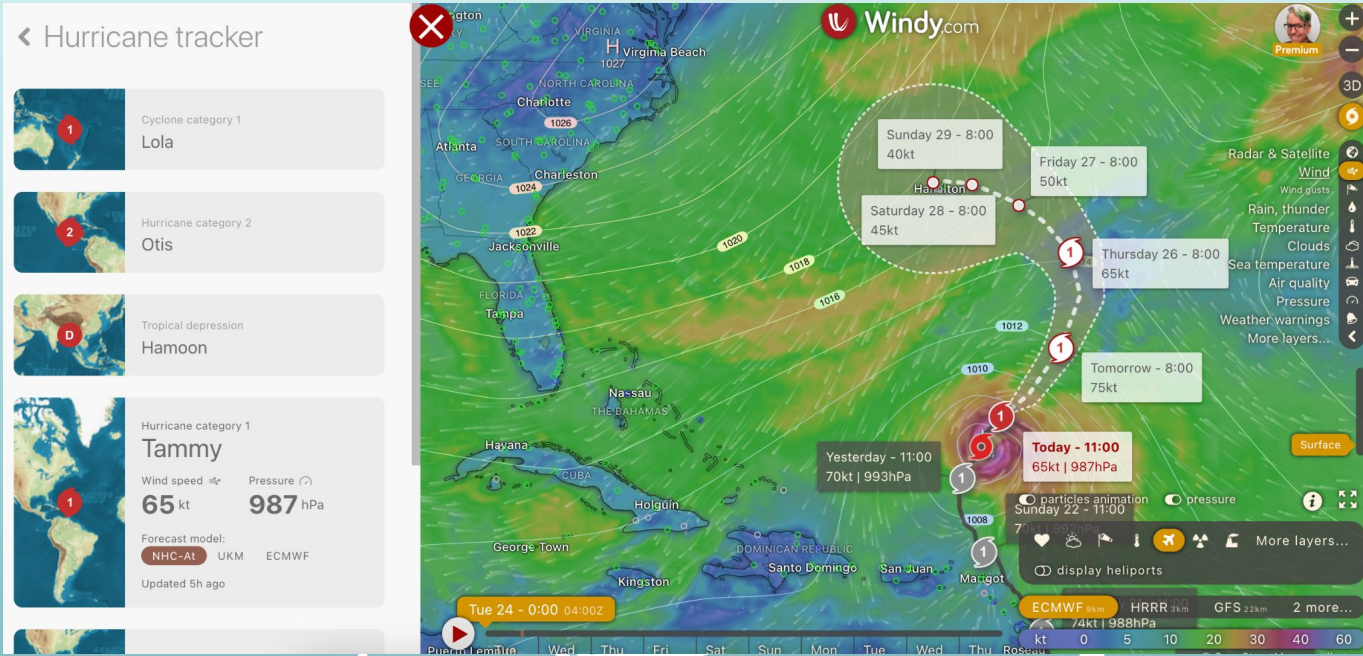
Location:	Truckee, California	Accident Number:	WPR21FA286
Date & Time:	July 26, 2021, 13:18 Local	Registration:	N605TR
Aircraft:	BOMBARDIER INC CL-600-2B16	Aircraft Damage:	Destroyed
Defining Event:	Loss of control in flight	Injuries:	6 Fatal
Flight Conducted Under:	Part 91: General aviation - Personal		

Because of their lack of preparation, they made critical errors on the approach that reduced the safety margin, which included[5]:

- flying the circling approach at a higher airspeed than the upper limit specified for the airplane's category C approach category;
 - failing to establish the airplane on the downwind leg of the circle-to-land approach; and
 - failing to visually identify the runway early in the approach, **likely due to obscuration by smoke.**
- 
- 
- 



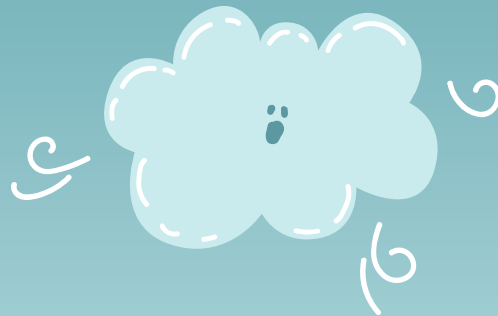
HURRICANE TRACKER





05

REAL TIME DATA



DATA LAYERS



METAR/TAF

Current METARS and TAFs
at airports



SATELLITE

Visible and Infrared



RAIN

Real time weather radar
with lightning.



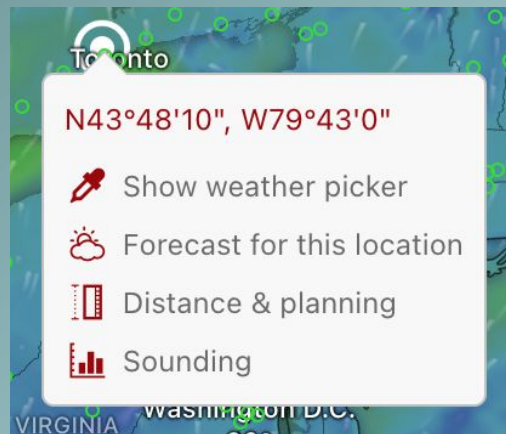
06

TRIP PLANNER

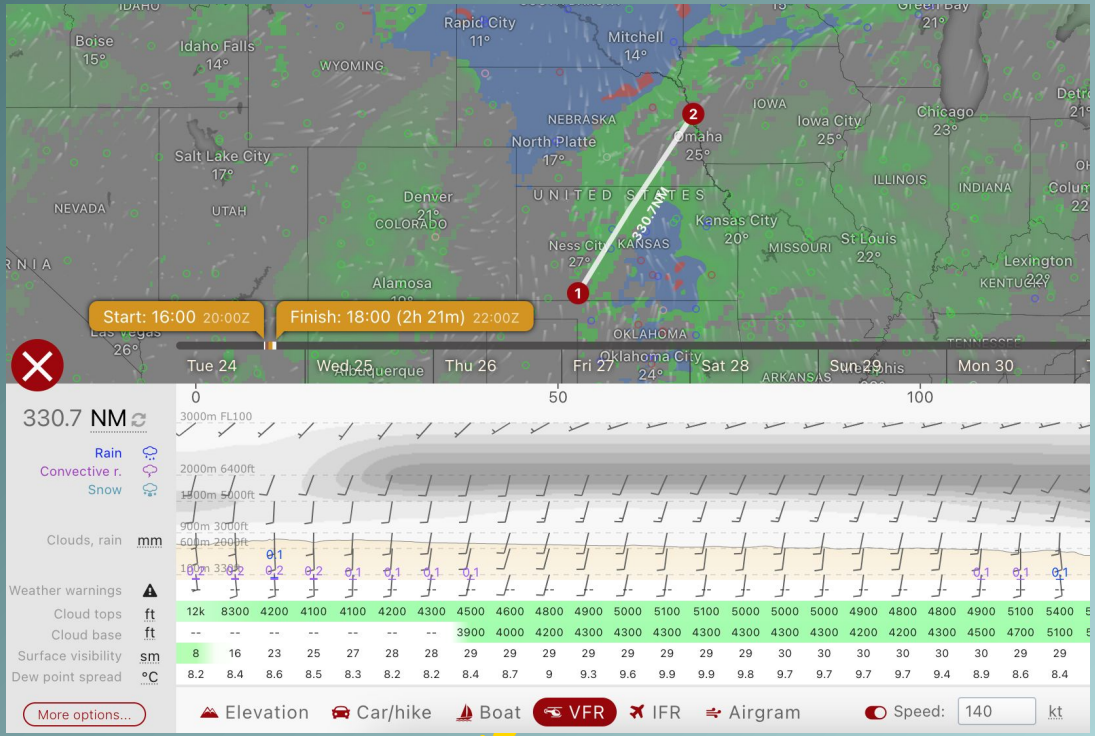
TRIP PLANNER

DISTANCE AND PLANNING

Right click on a location on the map and select "Distance & planning"



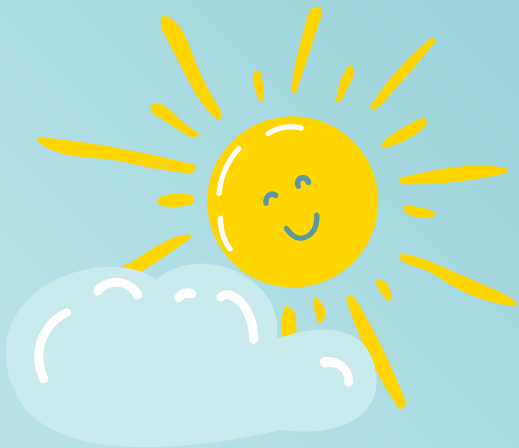
TRIP PLANNER



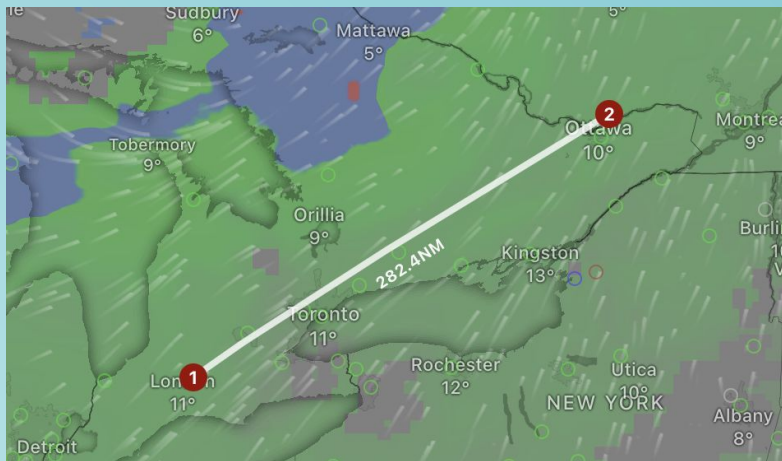
The background is a solid teal color. It features several stylized, light teal clouds of various sizes. Some clouds have simple smiley faces drawn on them. Small white stars are scattered across the background. In the center, there is a dark teal circle containing the number '07'. Below this circle, the text 'CROSS COUNTRY FLIGHT' is written in a bold, dark teal, sans-serif font.

07

CROSS COUNTRY FLIGHT



CYYZ TO CYUL



VFR Flight departing at 13:00 tomorrow.

Weather expected along route

Discuss mitigation strategies with avoiding rain/low cloud

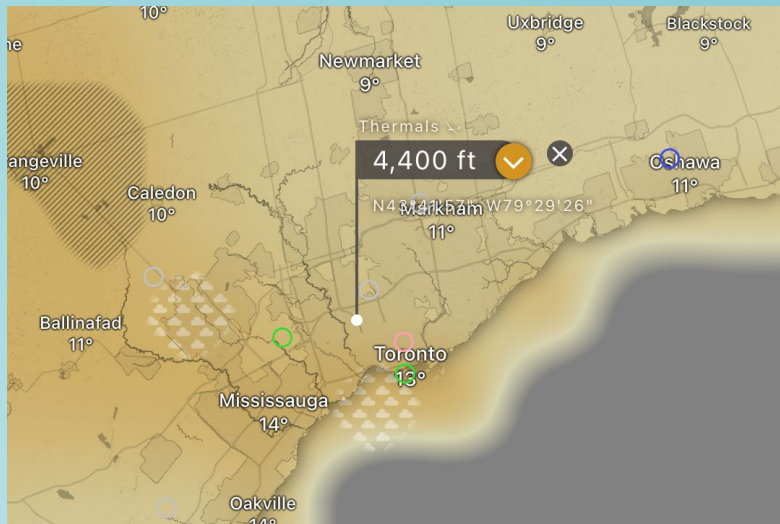
Optimize route for head/tailwinds

The background is a solid teal color. It features several stylized, light teal clouds of various sizes. Some clouds have simple smiley faces drawn on them. Scattered throughout the background are small, white, five-pointed stars. In the center, there is a dark teal circle containing the number '08'. Below this circle, the text 'LOCAL SIGHTSEEING' is written in a bold, dark teal, sans-serif font.

08

LOCAL SIGHTSEEING

SIGHTSEEING FLIGHT



VFR Flight to maximize passenger comfort

Departing tomorrow @ 13:00

Usually 1 hour or less

★ Would like good in flight visibility (no haze)



09

QUESTION & ANSWERS



★ ★

THANKS!



Post-Event Survey:

<https://forms.gle/tmjxvDxoGpRXf7LA9>

Slides and Webinar Recording:

<https://fly.blakecrosby.com/2023/10/using-windy-f-or-flight-planning.html>

★ ★

CREDITS: This presentation template was created by **Slidesgo**, including icons by **Flaticon** and infographics & images by **Freepik**





USING GFA IN WINDY



GFACN33 CWAQ
REGION
ONTARIO - QUÉBEC
CLOUDS AND WEATHER
NUAGES ET TEMPS


ISSUED AT 16/10/2023 1727Z
EMIS A

VALID AT 16/10/2023 1800Z
VALIDE A

LEGEND/LEGENDE

 TS  PL

 FZRA  FZDZ


0 60 120 180 NM
(True at 60°N Vrot à 60°N)

HGT ASL UNLS NOTED
CB TCU AND ACC IMPLY SIG TURB AND ICE
CB IMPLIES L LVL WS

COMMENTS / COMMENTAIRES

Forecast model: GFS 22km

Provider: NOAA



Updated 3h 33m ago (ref 12Z)

Next update expected at: **07:42 PM**, in 3h 26m 23s

Update interval: 6 - 7 hrs

Reference time: 2023-10-16T12:00:00Z

